

Mini Beast Safari

Record and identify the creatures you find

You will need

A pen or pencil, and a piece of paper or small note book

A magnifying glass if you have one

A small tub with a lid, small paint brush

Somewhere to go looking (yard, street, flower pots, planters, park)

Things to remember!

Ask permission before you 'look' around in pots or planters

Be very careful not to damage any plants, and be careful if you are moving heavy objects

Remember to release each creature as soon as you can by putting it back to where you found it.

Wash your hands after you have finished

Carefully move objects in your search area, you are very likely to see lots of mini-beasts scurrying away. If you can, collect them one at a time in your tub by gently swishing them into it with the brush.

Draw a picture of them, and label it where you can. Give it its name if you know it and if not ask someone else or look it up. We've given you some useful websites below.

Follow the KEY and see if it can help you

It is estimated that there are over 24,000 species of insect in the UK and many other invertebrates (creatures without backbones) so if you can't identify it using this Key then put it in 'Others' and check out these websites for ideas, or look in a book

<https://rspb.org.uk>

<https://www.woodlandtrust.org.uk>

<https://easyscienceforkids.com/all-about-insects>

<https://www.theschoolrun.com/homework-help/insects>

<https://www.ispotnature.org/>

<https://www.amentsoc.org/>

<https://www.opalexplornature.org/earthwormguide>

How many legs does your creature have?

NO legs
Mollusc

6 legs
Insect

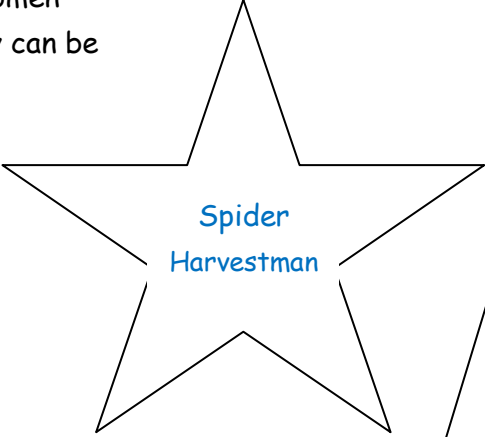
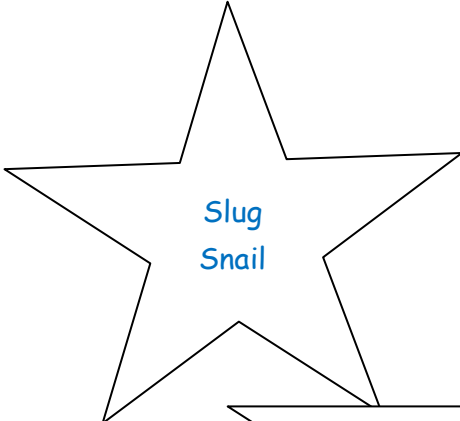
8 legs
Arachnid

Lots of legs
Myriapod
or
crustacean

No legs
Move on thin layer of slime

6 legs
Head, Thorax and abdomen
Some have wings but they can be hard to see

8 legs



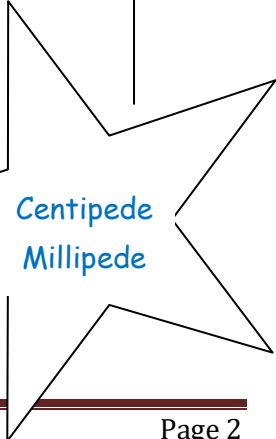
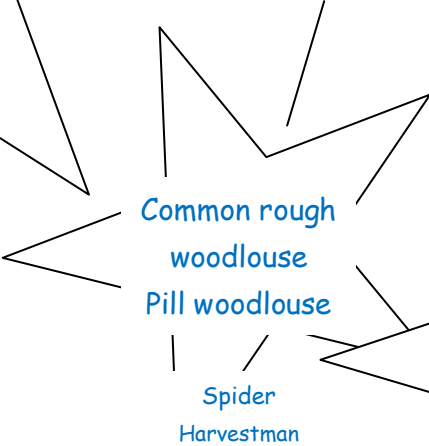
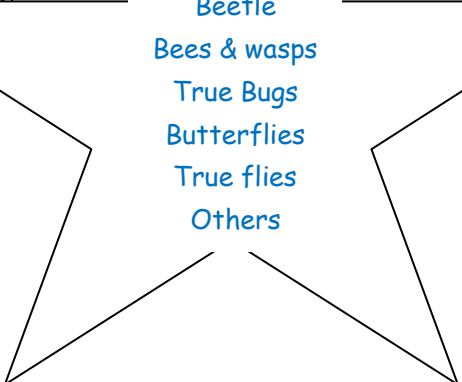
Slug
Snail

Spider
Harvestman

Beetle
Bees & wasps
True Bugs
Butterflies
True flies
Others

Armoured segmented body
14 legs

Segmented body
legs on each segment



Common rough woodlouse
Pill woodlouse

Spider
Harvestman

Centipede
Millipede

Note
Caterpillars are butterfly & moth larvae so are insects
Earthworms belong to a group called Annelids
Centipedes have 1 pair of legs per segment
Millipedes have 2 pairs of legs per segment